



BETHLEHEM
FIRST UNITED METHODIST CHURCH

THE HAPPENINGS

Our Mission: Bethlehem First is a community of believers devoted to **SHOWING CHRIST'S LOVE, SHARING THE HOPE FOUND IN HIM, AND BUILDING RELATIONSHIPS** that transform lives; we do this by *worshipping* passionately, *inviting* joyfully, *nurturing* faithfully, *growing* intentionally, and *serving* wholeheartedly.

JUNE 20 - 26, 2025

SUNDAY MORNING SERMAN SERIES

Spiritual Warfare: The Unseen Battle

Get ready to open your eyes to a battle that's been raging since the beginning of time – a battle that impacts every area of your life. This sermon series will uncover the truth about spiritual warfare, the reality of our unseen enemy, and the tools God gives us to stand strong and victorious. You will learn how to guard your heart, renew your mind, use the armor of God, and fight back with prayer, praise, and Scripture. Don't miss this life-changing series that will equip you to win the spiritual battle within, and live in freedom and victory through Christ.



May 18	Enduring Life's Battles
May 25	The Battle Within
June 1	I'm My Own Worst Enemy
June 8	Internal Changes
June 15	Why Is Life So Hard?
June 22	Live By Faith!
June 29	When My Plans Fall Apart
July 6	Dressed for Battle: The Armor of God

PLEASE JOIN US FOR WORSHIP
IN-PERSON OR ONLINE
SUNDAY MORNINGS
9:30 AM & 11 AM

SUNDAY, JUNE 22, 2025 | 2ND SUNDAY AFTER PENTECOST

"Why Is Life So Hard?" | Romans 5:12-21

Why is life so hard? Whether it's pain, loss, temptation, or failure, life can feel like an uphill battle. Sometimes, even when we try to do everything right, we still suffer. Why? Romans 5 answers: Life is hard because we live in a world broken by sin. When Adam disobeyed God, sin entered creation. With it came suffering, death, division, and despair. That disobedience cracked the foundation of creation and the shockwaves ripple through our lives today. This is the reality of spiritual warfare. We're battling a fallen world, our sinful nature, and Satan's schemes. Satan uses our pain, confusion, and temptation to pull us away from God. He whispers in our hard moments: *"God isn't good. You're alone. You'll never change."* But Paul shows us the gift of God's grace is greater than the curse of sin. Just as sin entered the world through Adam, grace came through Jesus. This means even though life is hard, Christ is with us, we're not powerless, nor forsaken. The pain we face is real, but so is the power of God's redemption. You might feel overwhelmed by what you're going through and ask, "Why is this happening?" The cross is God's answer: *"I see your pain. I've entered your suffering. I've overcome the curse."*

EVENTS / ACTIVITIES

FRIDAY, JUNE 20

10:30 am	Rooted Youth - Animal Shelter & Bowling Outing
----------	------------------------------------------------

SUNDAY, JUNE 22

9:30 am	Contemporary Worship Service	WC
9:30 am	Kids Sunday School	Chapel
9:30 am	Youth Sunday School	130
9:30 am	Adult Sunday School Classes	
10:45 am	Just Say Jesus Sunday School	125
11:00 am	Traditional Worship Service	Sanct
11:00 am	Kids Sunday School	Chapel
11:00 am	Youth Sunday School	130
11:00 am	Ghana Methodist Church Worship	WC

MONDAY, JUNE 23

4:00 pm	Book Art	128
---------	----------	-----

TUESDAY, JUNE 24

7:00 pm	Young Adults	130
---------	--------------	-----

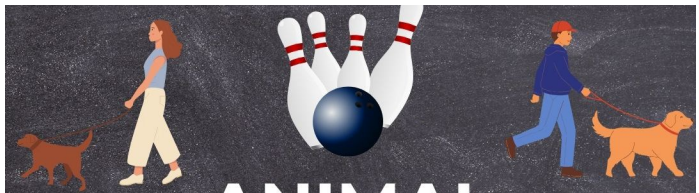
WEDNESDAY, JUNE 25

9:00 am	Crochet	128
11:00 am	Prayer Group	121
6:00 pm	The Journey	124

THURSDAY, JUNE 26

8:00 am	Mobile Food Distribution	Winder
6:00 pm	Trivia Night	WC

HOSTED BY BETHLEHEM FIRST KIDMIN



ANIMAL SHELTER TO WALK DOGS AND BOWLING

June 20th

10:30am: Meet at Church

11-1: Dog Walking

1-2: Lunch (bring money for this)

2:30-4:30: Bowling at Stars N Strikes

5: Church Pick-Up

Need Medical Waiver Form (if you went to camp, one is on file)

June 22
Thru
June 28



Pray for safe travels, safety on the job sites, and for God to use participants to show His love, share the hope of His promises, and build relationships with those we serve and with one another.

Matt Brown**Beth Dickinson****Keith Dickinson****Thomas Dickinson****Josh Ellis****Stu Grant****Morgan Howard****Sean Johnson****Phyllis Landers****Olivia Self****Amber Wigley**

MAY WE SHOW CHRIST'S LOVE, SHARE THE HOPE FOUND IN HIM, AND BUILD RELATIONSHIPS IN ALL THAT WE DO.

**BARROW COUNTY
OUTDOOR FOOD DISTRIBUTION
THURSDAY, JUNE 26**

This outdoor food distribution has taken place every month, rain or shine, since 2008. For the last several years, your Faith Promise dollars have allowed us to sponsor the June semi-trailer load of food from the Food Bank of NE Georgia.

During the month of June we encourage you to be the hands and feet of Christ and help distribute the food on **Thursday, June 26, 8:00 a.m. - 11:00ish** (until the food is distributed).

Please arrive at 7:30 a.m. to help set-up. Bring gloves and a box cutter/scissors, and no open toe shoes. Dress for hot weather!

**BARROW CO. MOBILE
FOOD DISTRIBUTION DAY**

**June 26th
8am**

Arrive at 7:30 am to help set-up

**Holly Hills Center
189 W Athens St.
Winder, GA 30680**

***Bring
work
gloves and
a box cutter
if you have
them!**

FITNESS CENTER UPDATE

Make sure to sign-up for our Trivia Night on Thursday, June 26, from 6:00 - 8:00 p.m. Cost is \$10.00 per person (12 and under are free). All proceeds will go towards our Back to BOLD church event for school supplies for students. linktr.ee/BFUMC.

**TRIVIA
NIGHT**

*Variety of Topics!
Prizes!!!*



JUNE 26TH 6-8PM \$10 PER PERSON

All proceeds benefit Back To Bold Backpack Drive
Tickets on linktr.ee/bfumc (TRIVIA NIGHT)



UPWARD

4TH-8TH GRADE CO-ED VOLLEYBALL

**Registration Ends July 11th
Games Begin August 9th**

Evaluations July 12th, Practices Start July 21st



Register now for our Upward Volleyball season 4th grade-8th grade. We are also looking for volleyball coach volunteers. You do not have to have a child participating to be a coach. Find us at Upward.org. Registration ends July 11.

BEEF & FREEZER RAFFLE - SUPPORT THE MINISTRY VILLAGE!

Get ready for a chance to stock your freezer and support one of our local ministry partners! The Ministry Village is holding a *Beef & Freezer Raffle*. **One lucky winner will receive half a cow AND a chest freezer to store it in.** Total prize value is \$2,900. Tickets are \$20 and all proceeds go to support the Ministry Village. To purchase a ticket contact Pastor Frank at frank.bernat@bethlehemfirstumc.com.

The Ministry Village exists to meet mental health needs and change lives in our community. Currently, the Ministry Village is working on a new initiative to launch a Resiliency Center to help those continue to recover from the shooting at Apalachee High School this past fall. The Branch will open this fall to meet the ongoing needs of students, facility, staff, and families of AHS and our community.

Ministry Village

Beef and Freezer Raffle

Half Cow [+/- 225 pounds] and Chest Freezer

Approximate Value \$2900

Steaks 32, Chuck Roast 6, Cube Steak 15

Stew/Kabob 12, Ground 140 lbs

Fajita Meat 6, Brisket 1 whole

\$20.00 / Ticket

Drawing to be held July 10, 2025

2025 Barrow

#back to BOLD

BACKPACK DRIVE



- Visit the trees in the Narthex and Stars Cafe & bring your donations back to church by July 17th
- Sign up to hand out backpacks on Friday, July 25th 4-8pm at Apalachee High School on linktr.ee/bfumc



Interest Meeting June 29th following the 11:00 service
Contact Pastor Megan for more info

MOMs Club Interest Meeting

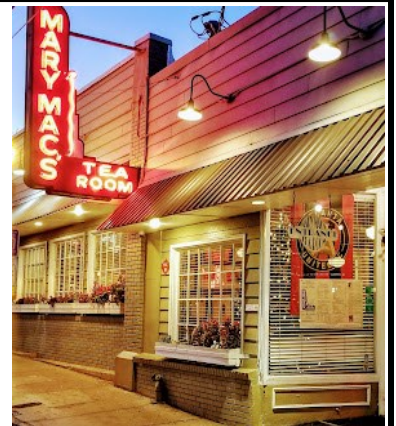
If you are a mom with kids or young teens, we would love for you to join us for Mom's Club! We will meet twice a month: once for moms and kids, and the second as a mom's night out. If you are interested, join us on June 29th following the 11:00 service to find out more!

Bethlehem Travel Club



Join us on Wednesday, July 9, at 8:00 am to visit the Carter Library and Museum in Atlanta. We will have lunch at Mary Mac's in Atlanta. Gas is \$8.00, Admission is \$10, and bring additional money for your lunch.

Contact Judy Smith to RSVP and to answer any questions, 770-307-8368.



A-SESSION BIBLE STUDY FOR TEEN GUYS

J.D. GREAR



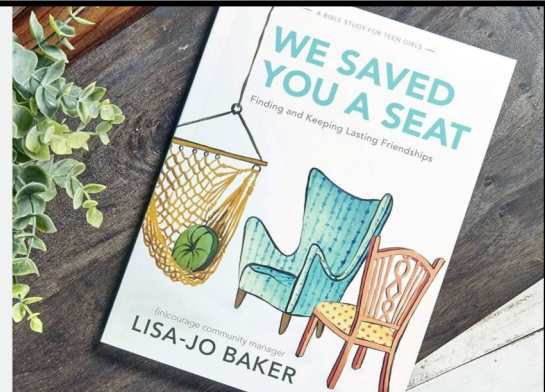
Faithful in the Fire

**Teen Boys
Summer Bible Study
Starting on July 13th
Sundays at 3:00 pm
8 Week Study**

Rising 6th grade to graduated high school seniors welcome!
For more info, contact Matt Brown.
Matt.Brown@BethlehemFirstUMC.com

**Teen Girls
Summer
Bible Study
Starting
July 13th
Sundays
at 3:00 pm
8 Week Study**

Rising 6th grade to graduated high school seniors welcome!
For more info, contact
Matt Brown@
[BethlehemFirstUMC.com](mailto:Matt.Brown@BethlehemFirstUMC.com)



Summer Adult Groups

It may be summer, but we still have lots to do around BFUMC! Check below for our adult group offerings. *Please note that summer schedules vary, so if you are thinking about participating on a particular date, please contact Pastor Megan.*

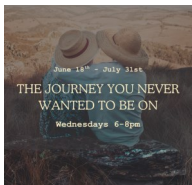
We'll be back with more groups in August!

For questions or to sign up for a group email Pastor Megan at megan.gomez@bethlehemfirstumc.com.



NEW THIS SUMMER!

The Journey You Never Wanted to Be On — Meets Wednesdays, June 18-July 30, from 6:00 - 8:00 pm.



Losing a loved one is incredibly difficult, but you don't have to walk through your grief alone. We invite you to join "The Journey You Never Wanted to Be On" for support, encouragement, and to walk with others who are also grieving.

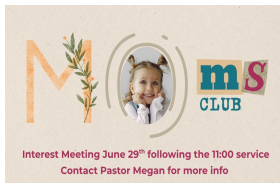
To sign up, email Pastor Megan at megan.gomez@bethlehemfirstumc.com.

Created To Create — Meets Tuesday, July 15, at 10:00 am, in the Fellowship Hall.

Back and revamped for the summer! Join us for a devotion, prayer, and fellowship as we create together. Bring your own art supplies for yourself or to share, or use the supplies available to create your own artwork (we have acrylic paint, watercolor paper, and some pouring paints to use). To sign up, email Pastor Megan at megan.gomez@bethlehemfirstumc.com.



Mom's Club — An Interest Meeting Sunday, June 29, following the 11:00 am service.



If you are a mom looking to connect with other moms, this is the group for you. We plan to meet twice a month: once for an outing for moms with their kids, and once for a mom's night out. For more information, contact Pastor Megan at megan.gomez@bethlehemfirstumc.com.

SUNDAY MORNING GROUPS

9:30 Sunday School Classes

Shared Journey — Sundays at 9:30 am in Room 128.

A group of men and women that aim to grow in their faith together through Bible study, Christian fellowship, and sharing life's experiences. The class selects their current book study together.

Wesley Class — Sundays at 9:30 am in Room 101.

A place for senior adults to connect and study the Bible together. All senior-aged adults are welcome in this curriculum- based class.

10:45 Sunday School

Just Say Jesus — Sundays at 10:45 am in Room 125.

A diverse group across multiple stages of life. Lessons are always Biblically centered and taught with humor, interesting historical perspectives, and life applications. There is also plenty of lively discussion.

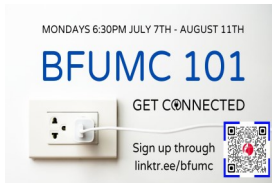
WEEKDAY AND WEEKNIGHT GROUPS

MONDAY GROUPS

Book Art Group — An on-going group that meets Mondays from 4:00 - 7:00 pm in Room 128.

Interested in learning a new art form? Everyone is welcome to join this group to learn how to cut and fold book pages to make one-of-a-kind art. Classes are \$10 each and all supplies are provided.

BFUMC 101 — Beginning Mondays, July 7, and ending August 11, 6:30-8:00 pm



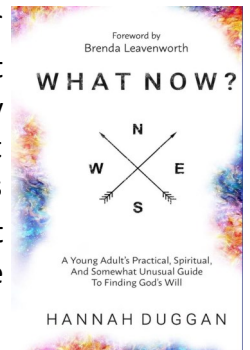
Looking to find out more about the ministries of Bethlehem First UMC? Looking to discover your spiritual gifts and figure out how to use them? Looking to find a place to serve? Join a small group of other people seeking community and a place of belonging.

To sign up, email Pastor Beth at beth.dickinson@bethlehemfirstumc.com.

TUESDAY GROUPS

Young Adults — Meets Tuesday nights (10-week study), beginning June 17, at 7:00 pm, Room 130.

As young adults, we question nearly every decision. We live with the fear that our futures might crash and burn. We're terrified of messing up—and missing out. But what if you're exactly where God wants you to be? What if He's not intimidated by your doubts? What if His will is already right in front of you? Some of the greatest revivals in history began with just a few young adults who dared to take God at His Word. There's no limit to what He can do when we're bold enough to ask, "What now?" If you're interested, email matt.brown@bethlehemfirstumc.com to get the book and learn more.



WEDNESDAY GROUPS

AM Crochet Group — Wednesdays at 9:00 am, Room 128.

Join a caring group of women as they make hand crafted items for mission and ministry. All experience levels, including beginners wanting to learn crochet, are welcome. This group is ongoing, and people are welcome to join in at any time.

Prayer Group — Wednesdays at 11:00 am, Room 121 (the Family Room, located just off the Stars Café).

A wonderful group that seeks to be Spirit-led as they pray for our church, our community, and our world. This group is ongoing and all are welcome to join in on a one-time, sometimes, or weekly basis.



MISCELLANEOUS GROUPS *(these groups meet monthly or on their own unique schedule)*

Disc Golf — Want to build relationships with others and share a devotion with a round of disc golf? Join this fun group and play a round. This is for beginners and seasoned players. If you don't have discs, don't worry we have plenty to share to get you started. Games are scheduled for one Saturday each month at various locations within a 45-minute drive from BFUMC. Contact Lee Wigley at wigley8184@yahoo.com for more information, the 2025 schedule, and an invite to Facebook Group if interested.

Hand and Foot Card Playing — Join this group for food and card games every 2nd and 4th Sunday following the 11:00 service in Room 128.

Hiking Group — Newcomers and experienced hikers welcome to join in this group, which offers monthly hikes with a devotional. Contact Amber Wigley for more information at amber.wigley@bethlehemfirstumc.com.

In the Middle — In your 30s-40s and looking for a cool group to hang out with? Please consider joining us. For more information contact Josh Ellis at clemsontiger2003@gmail.com.

Travel Club — Looking for trips both local and further afield? Join the travel club. Different trips offered every month. Contact Wanda Doster for more information at widoster@windstream.net.

United Methodist Women AM — 3rd Tuesday of every month at 1:00 am, Room 128.

A service and mission-oriented group for women. All women welcome.

United Methodist Women PM — 3rd Thursday of every month at 6:00 pm, Room 128.

It's UMW for working women! All ladies welcome to join us for service and missions.

Wisteria—2nd Monday of each month—meeting locations and times vary based on activities.

Wisteria is a friendship group of women, a place to thrive, be loved, encouraged, and celebrated while having fun and laughter along the way. We have conversation, activities, outings and always prayer. If you have been a widow for a day or years, you are welcome. Come as you are. Contact Jean Stroud if you are interested at stroud.imd@gmail.com.

*Grow in the grace and
knowledge of our Lord and
Savior Jesus Christ*

2 Peter 3:18

GROW

MAKE A COMMITMENT TO GROW SPIRITUALLY.
JOIN A SUNDAY SCHOOL CLASS OR GROW GROUP.
Attend, Teach, Facilitate.

Are You a Leader or a Facilitator?

A **leader** sets direction, provides vision, and inspires a team towards a goal, while a **facilitator** guides a group through a process, encourages participation, and ensures everyone has a voice.

If you have a book or a study that interests you, then maybe you will consider it to be developed into one of our grow group seasons. Think about fall, winter, spring or summer. Will one of these work for you? Why don't you have a conversation with Pastor Megan and talk over the possibilities. Contact megan.gomez@bethlehemfirstumc.com if you have one of these gifts.

PRAYER CONCERNS

as of Sunday, June 15, 2025

To receive prayer updates and notices
for e-prayers, contact

Karen Whitehead 770-867-3727,

karen.whitehead@bethlehemfirstumc.com

Note: Names in Bold added or updated this week

Aguirre, Jonni – *severe back pain and spasms (Sheila Brautigam)*
 Banks, Theo – *prayers for daughter. Prayers for my friend's daughter having chemo*
 Berger, Bruce – *large cyst pressing on kidney and gallbladder. Testing next week*
 Brannon, Amanda – *Praises for progress in recovery; continued prayers for long-term healing of foot/leg*
 Carey, Charleen – *medical procedure on 6/24*
 Cornelius, Julie – *friend Amy and her family will move from Cambodia back to Georgia. Their 3 children will resume schooling in America*
 Daniel, Richard – *multiple myeloma (Pete & Letty Black-cousin's nephew)*
Edge, Quentin – *healing from surgery and treatment plan for cancer*
Fowler, Nancy – *recovery from heart valve procedure, now in AFib will have ablation soon. Currently severe back pain and unable to have injection until heart problems are resolved*
 Gamboe, Jim – *chemo treatments (Sue Dalton's brother)*
 Grant, Stu – *surgery to address wound will take place; waiting on date*
Gregerson, Diana – *breast cancer surgery 6/19*
 Gullion, Lisa – *continued healing*
Hawkins, Greg – *heart surgery on 6/18*
Heck, Preston – *meniscus surgery on 6/19*
Howard, Morgan – *thumb surgery scheduled for 7/3*
 Howard, Rachel – *continued healing from knee surgery*
 Hughes, Terry – *Kidney Cancer (Perry Wingard's twin brother)*
 LaMontague, Ron – *recovering from car accident; other health concerns (Ann Teaster)*
Lee, Dawn – *will have MRI's for health issues on 6/25*
 McErlean, Jim – *mini stroke (Ruth Berger)*
 Murphy, Todd – *awaiting upcoming hip surgery on 6/26*
Muse, Helen – *recovery from surgery for broken hip (Andrea Jerman's mom)*
 Norris, Frances – *continued healing through wound care (Judy Smith)*
Orendorff, Al – *spine surgery (laminectomy) on 6/23*
Pugh, Ruth – *healing from asthmatic bronchitis*
 Rhodes, Charlene – *seeking a new place to live locally, close to family*

Roberts, Linda – *prayers for sister and daughter with major health issues which are life threatening*
Steele, Austin – *3-year-old boy with recurrent brain tumor, now inoperable (Beth Dickinson)*
Thomas, Janet – *carpal tunnel surgery on 6/19 went well*
 Webb, Joe – *brain cancer (Pete & Letty Black)*
 White, Earlene – *heart cath on 6/18 and future heart procedure to follow; recent partial house fire*
 White, Lonnie – *relief of pain from blood clots and for clots to dissolve (Earlene White's son)*

Ongoing Requests

Alcorn, Shirley – *cancer has spread; home hospice*
 Allen, Tyler
Bagwell, Ken – *surgery for internal biliary stent on 6/23; ongoing chemo for pancreatic cancer*
 Bell, Charles – *Hodgkin's lymphoma-chemotherapy; recovery from prostate surgery*
 Bernat, Betty – *dementia*
 Boyd, Evelyn – *on hospice care*
 Dean, Jamie – *breast cancer*
Dillard, Tonya – *back home following recent hospitalization for seizures; ongoing infusions*
 Fleeman, Johnny & Brenda
 Freeman, Jeffery – *colon cancer (Pastor Frank's cousin)*
 Jonse, Mary & Tom – *health and safety (Monica Mirkes' parents)*
 Massey Family – *health issues*
 Mercer, Susan
 Mixon, Tommy – *going on hospice following completion of chemo (Tracey Reed's stepfather)*
Monk, John – *begins chemo on 6/23*
 Odum, Jimmy – *ongoing chemo treatments for returned cancer*
 Partee, John & Mary Nell – *congestive heart failure*
 Pugh, Matt – *pray for successful treatment of cancer (nephew of Lamar & Ruth Pugh)*

Special Requests

- BFUMC Mission Team going to Augusta 6/22 – 6/28 to aid with victims of hurricane damage
- Grief Support Group starting on 6/18
- War in Middle East

OUR HOMEBOUND



Abbett, Terry & Suda 770-307-0883
709 Westbury Drive
Bethlehem, GA 30620

Alcorn, Shirley, Spouse: Tom 678-227-2914
147 Thorn Brook Road
Bethlehem, GA 30620

Bell, Charles, Spouse: Lynne 770-262-9000
429 Aberdeen Way
Winder, GA 30680

Boyd, Evelyn 770-867-9551
The Oaks at Braselton
5373 Thompson Mill Rd., Room 606
Hoschton, GA 30548-4037

Chaffin, Patty 912-754-2402
133 Brookstone Way
Rincon, GA 31326

Ellis, Marilyn jse3801@gmail.com
Great Oaks Senior Living
920 GA-138 NW
Monroe, GA 30655

Fleeman, Brenda & Johnny 678-863-1765
Mulberry Grove Senior Living
343 Prince St., Room #3
Statham, GA 30666

Haralson, Evelyn 770-466-0550
Riverside Healthcare
5100 W. Street
Covington, GA 30014

McCauslan, Harriet 678-520-5692
2750 Atlanta Hwy., Apt. 114
Athens, GA 30606

Morris, Bobbie 678-447-9670
774 Exchange Mill Place
Dacula, GA 30019

Partee, Mary Nell, Spouse: John 770-867-9784
217 Carl Bethlehem Road
Bethlehem, GA 30620

Smith, Connie 770-867-4171
622 Old Smith Cemetery Rd.
Winder, GA 30680

White, Earlene 404-990-1666
1050 Octavia Ct.
Winder, GA 30680

BFUMC CARE MINISTRY

Reach out to those who might need a kind word or a sign of support. A note, a kind word of encouragement, thinking of you, or a note of sympathy or support, can mean so much to someone going through an illness or a difficult time in their life.

- **Preston Heck** - *meniscus surgery on 6/19*
1212 Cottage Blvd., Athens, GA 30605
- **Greg Hawkins** - *heart surgery 6/18*
330 Arbor Rd., SW., Monroe, GA 30656
- **Janet Thomas** - *carpal tunnel surgery 6/19*
2748 Broach Rd., NW., Monroe, GA 30656



Karen Whitehead, Care Ministry Coordinator
404-245-0443
Karen.Whitehead@bethlehemfirstumc.com

OUR CLERGY



REV. FRANK BERNAT

SENIOR PASTOR

frank.bernat@bethlehemfirstumc.com
770-867-3727 ext. 105



REV. BETH DICKINSON

ASSOCIATE PASTOR

beth.dickinson@bethlehemfirstumc.com
770.867.3727 ext. 106



REV. MEGAN GOMEZ

ASSOCIATE PASTOR

megan.gomez@bethlehemfirstumc.com
770.867.3727 ext. 107

OUR STAFF

OFFICE PHONE 770.867.3727

Accounts Manager, Will Lowndes.....ext. 104
will.lowndes@bethlehemfirstumc.com

Children Ministries Director, Amber Wigley.....ext. 110
amber.wigley@bethlehemfirstumc.com

Communications Director, Trish Johnson.....ext. 108
trish.johnson@bethlehemfirstumc.com

Custodian, Anissa Sullivan.....ext. 109
anissa.sullivan@bethlehemfirstumc.com

Executive Assistant, Karen Whitehead.....ext. 102
karen.whitehead@bethlehemfirstumc.com

Facilities Manager, Amber Wigley.....ext. 110
amber.wigley@bethlehemfirstumc.com

Fitness & Rec Director, Anissa Sullivan.....ext. 109
anissa.sullivan@bethlehemfirstumc.com

Preschool Director, Lizzy Sheffield.....770.867.3724
lizzy.sheffield@bethlehemfirstumc.com

Student & Young Adult Director, Matt Brown.....ext. 103
matt.brown@bethlehemfirstumc.com

Choir Director, Haley Cox Mitchell
haley.mitchell@bethlehemfirstumc.com

Pianist, Katrina Wilson
pbp4katie@gmail.com

Sound Technician, Jaron Hardy
jaron.hardy@bethlehemfirstumc.com

Worship Leader, Tim Darden
tim.darden@bethlehemfirstumc.com



DONATIONS NEEDED

- Oatmeal & Grits
- Hamburger & Tuna Helper
- Cereal
- Peanut Butter
- Canned Meat



DONATIONS NEEDED

- Tuna or Chicken Meat Pouches
- Soup or Stew (Pull-Tops Only)
- Juice Boxes